

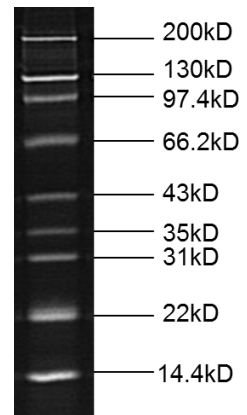
EZ-Ladder Fluorescent Protein Marker

Product introduction:

Product catalog#	Product name	Product packaging
MKP004	EZ-Ladder Fluorescent Protein Marker	250 μ l

EZ-Ladder Fluorescent Protein Molecular Weight Markers for SDS-PAGE contains a total of 9 fluorescent proteins from 14 KD to 200 KD. The product is designed as molecular weight standards for Instant-Bands pre-stained protein samples as well as other fluorescent protein samples. Combining with Instant-Bands, the product provides a fast and convenient way to analyze SDS-PAGE gel results. EZ-Ladder Fluorescent Protein Molecular Weight Markers for SDS-PAGE contains a total of 9 fluorescent proteins from 14 KD to 200 KD. The product is designed as molecular weight standards for Instant-Bands pre-stained protein samples as well as other fluorescent protein samples. Combining with Instant-Bands, the product provides a fast and convenient way to analyze SDS-PAGE gel results.

- EZ-Ladder markers in a SDS gel can be visualized directly on an UV or LED transilluminator. The fluorescent marker proteins yield 9 brilliant fluorescence bands. The bands show the similar intensity and ex/em profiles as those of Instant-Bands stained samples.
- The product can also be used as molecular weight marker for Western blot experiment. Similar to that in gel, membrane transferred fluorescent markers can be visualized on an UV or LED transilluminator.
- The EZ-Ladder Fluorescent Protein Marker has been pre-treated. It is stored in SDS-PAGE loading buffer and is ready to use.



Directions for use:

- For regular mini format PAGE gels (10 cm x 10 cm), load 5 μ l EZ-Ladder Fluorescent Protein Marker per well.
- Run electrophoresis according to standard protocol.
- After electrophoresis, the marker bands can be directly visualized and pictured with regular gel image analysis system on an UV light source.
- Alternatively, the bands can be visualized on a LED transilluminator.
- The markers can also be stained by Coomassie brilliant blue if needed.

Storage condition:

Save at -20°C , valid for one year.

Attention:

The EZ-Ladder Prestained Protein Marker can be used directly, do not treat or boil.